

# I-440 PROPOSED ITS

STATE PROJ. NO. 19014-1169-04  
DAVIDSON COUNTY



INSTALL UPGRADED RDS ON EXISTING LIGHT POLE STA. 1000+00 (EX. RDS #158)

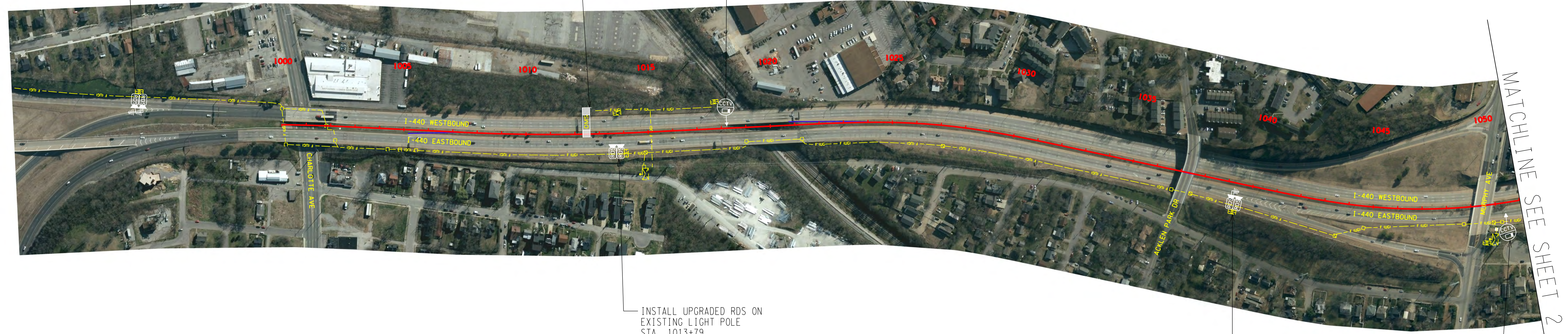
REMOVE AND RELOCATE EXISTING DMS #21 ON PROPOSED OVERHEAD SUPPORT STRUCTURE STA. 1012+70

INSTALL UPGRADED CCTV ON EXISTING POLE STA. 1017+57 (EX. CCTV #63)

INSTALL UPGRADED RDS ON EXISTING LIGHT POLE STA. 1013+79 (EX. RDS #159 & 160)

INSTALL UPGRADED RDS ON EXISTING LIGHT POLE STA. 1039+40 (EX. RDS #161 & 162)

INSTALL UPGRADED CCTV ON EXISTING POLE STA. 1049+62 (EX. CCTV #64)



**I.T.S. LEGEND NOTE**

ALL DEVICE SYMBOLS ARE FOR GRAPHICAL REPRESENTATION ONLY AND ARE NOT TO SCALE. CENTER OF DEVICE IS INDICATED ON PLANS BY STATION.

**NOTE:**  
ALL RDS DEVICES SHOWN ON THE PLANS ARE EXISTING. USE UPGRADED RDS DEVICES (ONE (1) RDS DEVICE FOR BOTH DIRECTIONS) WHEN POSSIBLE.

LEGEND	
STRUCTURE TYPE	EXISTING / PROPOSED
PROPOSED CABINET	
PROPOSED FIBER LINE CONDUIT	
PROPOSED DYNAMIC MESSAGE SIGN (DMS)	
PROPOSED RADAR DETECTION SYSTEM (RDS)	
PROPOSED CLOSED-CIRCUIT TV (CCTV)	
EXISTING CABINET	
EXISTING FIBER LINE CONDUIT	
EXISTING DEMARICATION POINT	



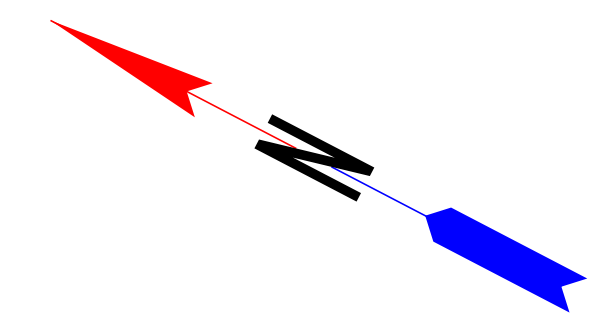
JANUARY 2018





# I-440 PROPOSED ITS

STATE PROJ. NO. 19014-1169-04  
DAVIDSON COUNTY



INSTALL UPGRADED RDS  
ON EXISTING POLE  
STA. 1062+59  
(EX. RDS #163 & 164)

INSTALL UPGRADED CCTV  
ON EXISTING POLE  
STA. 1077+00  
(EX. CCTV #65)

REMOVE AND RELOCATE EXISTING DMS #22 ON  
PROPOSED OVERHEAD SUPPORT STRUCTURE  
STA. 1089+19

INSTALL UPGRADED RDS ON  
EXISTING LIGHT POLE  
STA. 1087+84  
(EX. RDS #165 & 166)

INSTALL UPGRADED RDS  
ON EXISTING POLE  
STA. 1112+43  
(EX. RDS #167 & 168)

INSTALL UPGRADED CCTV  
ON EXISTING POLE  
STA. 1112+43  
(EX. CCTV #66)

### I.T.S. LEGEND NOTE

ALL DEVICE SYMBOLS ARE FOR GRAPHICAL REPRESENTATION ONLY AND ARE NOT TO SCALE. CENTER OF DEVICE IS INDICATED ON PLANS BY STATION.

**NOTE:**  
ALL RDS DEVICES SHOWN ON THE PLANS ARE EXISTING. USE UPGRADED RDS DEVICES (ONE (1) RDS DEVICE FOR BOTH DIRECTIONS) WHEN POSSIBLE.

LEGEND	
STRUCTURE TYPE	EXISTING / PROPOSED
PROPOSED CABINET	
PROPOSED FIBER LINE CONDUIT	
PROPOSED DYNAMIC MESSAGE SIGN (DMS)	
PROPOSED RADAR DETECTION SYSTEM (RDS)	
PROPOSED CLOSED-CIRCUIT TV (CCTV)	
EXISTING CABINET	
EXISTING FIBER LINE CONDUIT	
EXISTING DEMARICATION POINT	



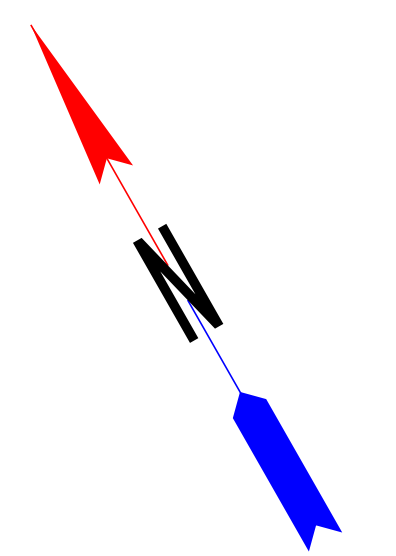
JANUARY 2018





# I-440 PROPOSED ITS

STATE PROJ. NO. 19014-1169-04  
DAVIDSON COUNTY



MATCHLINE SEE SHEET 2

MATCHLINE SEE SHEET 4



INSTALL UPGRADED CCTV  
ON EXISTING POLE  
STA. 1134+06  
(EX. CCTV #67)

INSTALL UPGRADED RDS  
ON EXISTING POLE  
STA. 1135+38  
(EX. RDS #169 & 170)

INSTALL UPGRADED RDS ON  
EXISTING LIGHT POLE  
STA. 1161+22  
(EX. RDS #171 & 172)

REMOVE EXISTING  
CCTV #68 & POLE

INSTALL UPGRADED RDS ON  
EXISTING LIGHT POLE  
STA. 1184+29  
(EX. RDS #173 & 174)

REMOVE AND RELOCATE EXISTING DMS #30 ON  
PROPOSED OVERHEAD SUPPORT STRUCTURE  
STA. 1178+30

INSTALL UPGRADED CCTV  
ON PROPOSED POLE  
STA. 1167+46

**I.T.S. LEGEND NOTE**

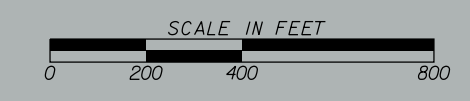
ALL DEVICE SYMBOLS ARE FOR GRAPHICAL REPRESENTATION ONLY AND ARE NOT TO SCALE. CENTER OF DEVICE IS INDICATED ON PLANS BY STATION.

**NOTE:**  
ALL RDS DEVICES SHOWN ON THE PLANS ARE EXISTING. USE UPGRADED RDS DEVICES (ONE (1) RDS DEVICE FOR BOTH DIRECTIONS) WHEN POSSIBLE.

LEGEND	
STRUCTURE TYPE	EXISTING / PROPOSED
PROPOSED CABINET	
PROPOSED FIBER LINE CONDUIT	
PROPOSED DYNAMIC MESSAGE SIGN (DMS)	
PROPOSED RADAR DETECTION SYSTEM (RDS)	
PROPOSED CLOSED-CIRCUIT TV (CCTV)	
EXISTING CABINET	
EXISTING FIBER LINE CONDUIT	
EXISTING DEMARICATION POINT	
REMOVE CLOSED-CIRCUIT TV (CCTV)	



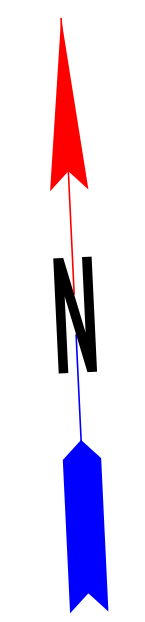
JANUARY 2018





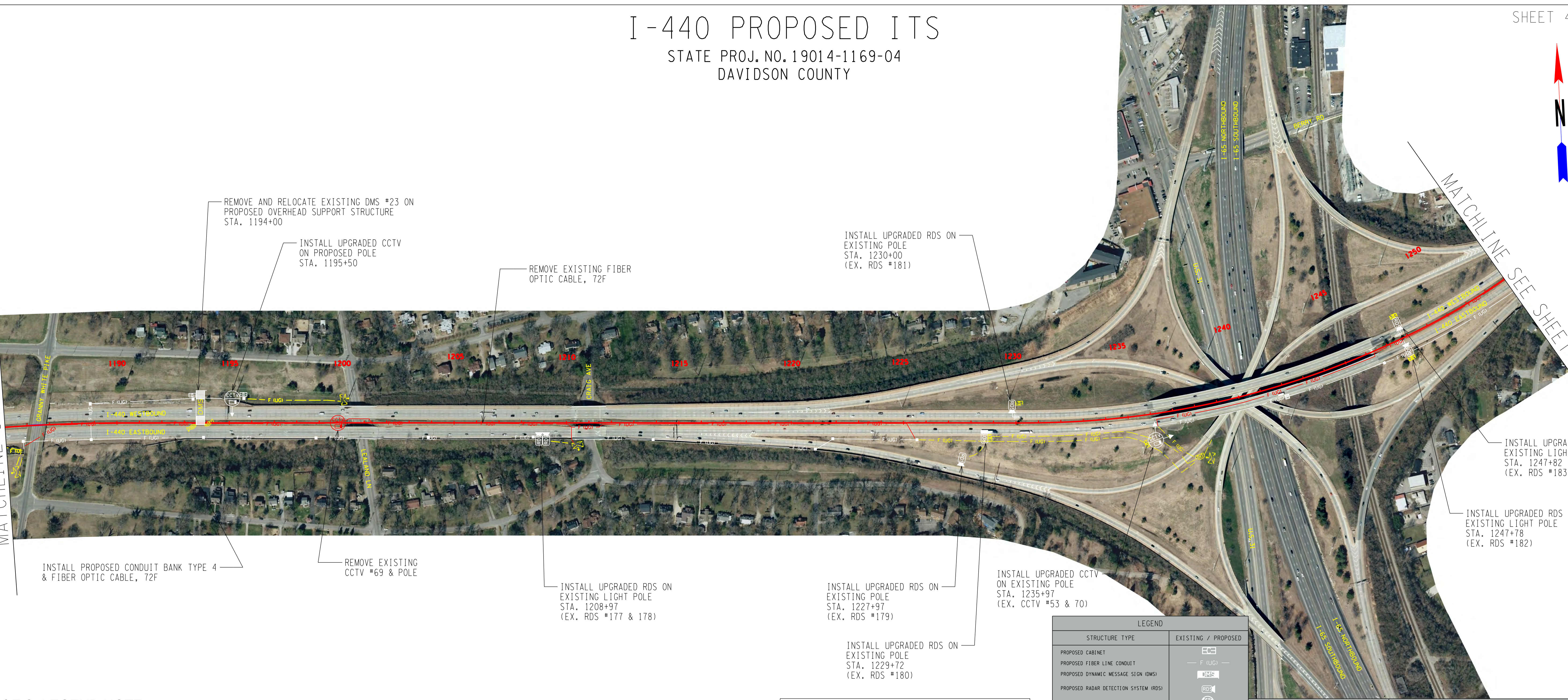
# I-440 PROPOSED ITS

STATE PROJ. NO. 19014-1169-04  
DAVIDSON COUNTY



MATCHLINE SEE SHEET 3

MATCHLINE SEE SHEET 5



REMOVE AND RELOCATE EXISTING DMS #23 ON PROPOSED OVERHEAD SUPPORT STRUCTURE STA. 1194+00

INSTALL UPGRADED CCTV ON PROPOSED POLE STA. 1195+50

REMOVE EXISTING FIBER OPTIC CABLE, 72F

INSTALL UPGRADED RDS ON EXISTING POLE STA. 1230+00 (EX. RDS #181)

INSTALL UPGRADED RDS ON EXISTING LIGHT POLE STA. 1247+82 (EX. RDS #183)

INSTALL UPGRADED RDS ON EXISTING LIGHT POLE STA. 1247+78 (EX. RDS #182)

INSTALL PROPOSED CONDUIT BANK TYPE 4 & FIBER OPTIC CABLE, 72F

REMOVE EXISTING CCTV #69 & POLE

INSTALL UPGRADED RDS ON EXISTING LIGHT POLE STA. 1208+97 (EX. RDS #177 & 178)

INSTALL UPGRADED RDS ON EXISTING POLE STA. 1227+97 (EX. RDS #179)

INSTALL UPGRADED CCTV ON EXISTING POLE STA. 1235+97 (EX. CCTV #53 & 70)

INSTALL UPGRADED RDS ON EXISTING POLE STA. 1229+72 (EX. RDS #180)

**I.T.S. LEGEND NOTE**

ALL DEVICE SYMBOLS ARE FOR GRAPHICAL REPRESENTATION ONLY AND ARE NOT TO SCALE. CENTER OF DEVICE IS INDICATED ON PLANS BY STATION.

**NOTE:**  
ALL RDS DEVICES SHOWN ON THE PLANS ARE EXISTING. USE UPGRADED RDS DEVICES (ONE (1) RDS DEVICE FOR BOTH DIRECTIONS) WHEN POSSIBLE.

LEGEND	
STRUCTURE TYPE	EXISTING / PROPOSED
PROPOSED CABINET	E
PROPOSED FIBER LINE CONDUIT	F (UG)
PROPOSED DYNAMIC MESSAGE SIGN (DMS)	DMS
PROPOSED RADAR DETECTION SYSTEM (RDS)	RDS
PROPOSED CLOSED-CIRCUIT TV (CCTV)	CCTV
EXISTING CABINET	E
EXISTING FIBER LINE CONDUIT	F (UG)
EXISTING DEMARICATION POINT	DP
REMOVE FIBER LINE CONDUIT	F (UG)
REMOVE CLOSED-CIRCUIT TV (CCTV)	CCTV



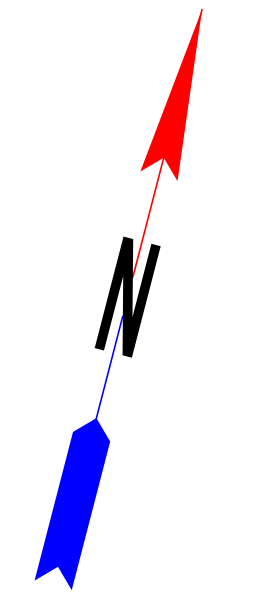
JANUARY 2018





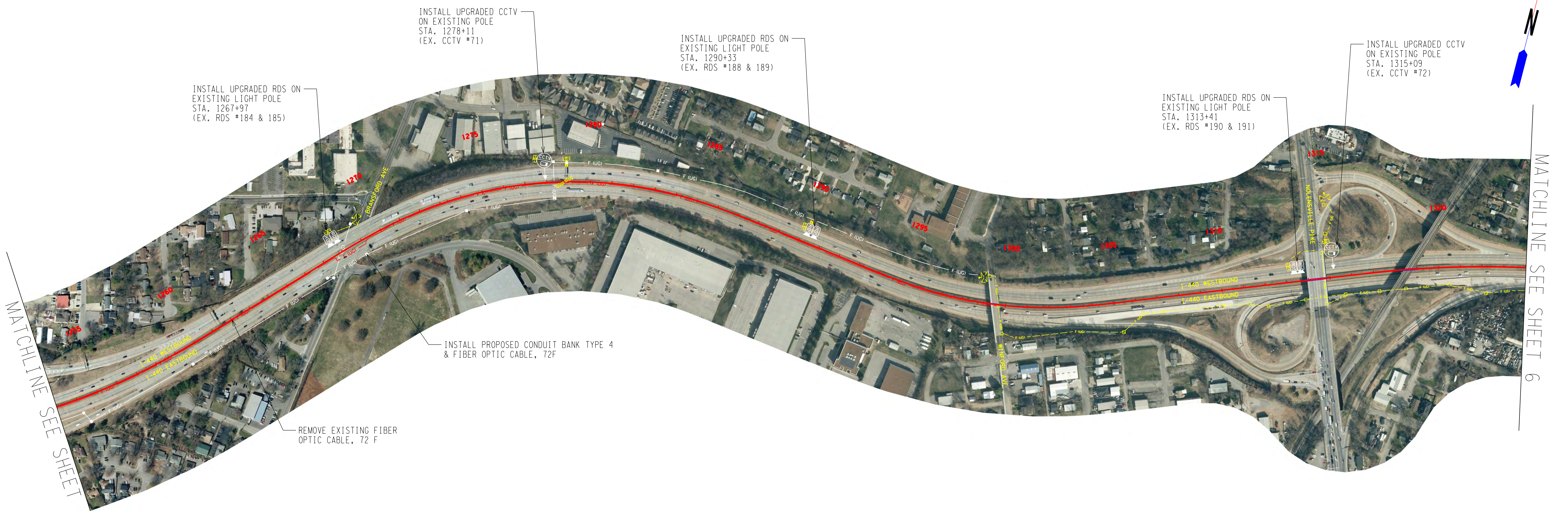
# I-440 PROPOSED ITS

STATE PROJ. NO. 19014-1169-04  
DAVIDSON COUNTY



MATCHLINE SEE SHEET 4

MATCHLINE SEE SHEET 6



**I.T.S. LEGEND NOTE**  
ALL DEVICE SYMBOLS ARE FOR GRAPHICAL REPRESENTATION ONLY AND ARE NOT TO SCALE. CENTER OF DEVICE IS INDICATED ON PLANS BY STATION.

**NOTE:**  
ALL RDS DEVICES SHOWN ON THE PLANS ARE EXISTING. USE UPGRADED RDS DEVICES (ONE (1) RDS DEVICE FOR BOTH DIRECTIONS) WHEN POSSIBLE.

LEGEND	
STRUCTURE TYPE	EXISTING / PROPOSED
PROPOSED CABINET	(E)
PROPOSED FIBER LINE CONDUIT	F (UG) —
PROPOSED DYNAMIC MESSAGE SIGN (DMS)	(P)
PROPOSED RADAR DETECTION SYSTEM (RDS)	(P)
PROPOSED CLOSED-CIRCUIT TV (CCTV)	(P)
EXISTING CABINET	(E)
EXISTING FIBER LINE CONDUIT	F (UG) —
EXISTING DEMARICATION POINT	(E)
REMOVE FIBER LINE CONDUIT	F (UG) —



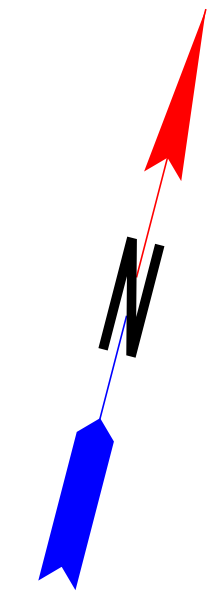
JANUARY 2018



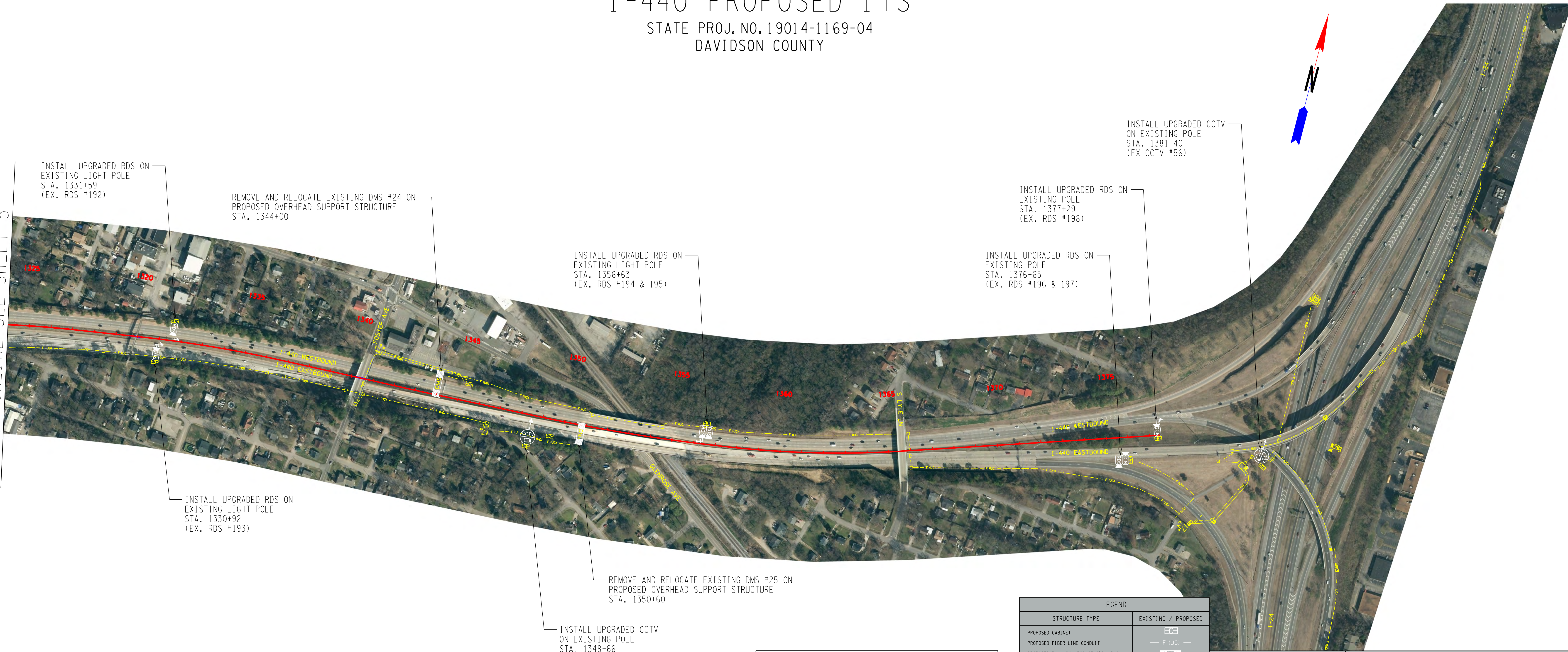


# I-440 PROPOSED ITS

STATE PROJ. NO. 19014-1169-04  
DAVIDSON COUNTY



MATCHLINE SEE SHEET 5



INSTALL UPGRADED RDS ON EXISTING LIGHT POLE  
STA. 1331+59  
(EX. RDS #192)

REMOVE AND RELOCATE EXISTING DMS #24 ON PROPOSED OVERHEAD SUPPORT STRUCTURE  
STA. 1344+00

INSTALL UPGRADED RDS ON EXISTING LIGHT POLE  
STA. 1356+63  
(EX. RDS #194 & 195)

INSTALL UPGRADED RDS ON EXISTING POLE  
STA. 1377+29  
(EX. RDS #198)

INSTALL UPGRADED CCTV ON EXISTING POLE  
STA. 1381+40  
(EX CCTV #56)

INSTALL UPGRADED RDS ON EXISTING POLE  
STA. 1376+65  
(EX. RDS #196 & 197)

INSTALL UPGRADED RDS ON EXISTING LIGHT POLE  
STA. 1330+92  
(EX. RDS #193)

REMOVE AND RELOCATE EXISTING DMS #25 ON PROPOSED OVERHEAD SUPPORT STRUCTURE  
STA. 1350+60

INSTALL UPGRADED CCTV ON EXISTING POLE  
STA. 1348+66  
(EX. CCTV #73)

**I.T.S. LEGEND NOTE**  
ALL DEVICE SYMBOLS ARE FOR GRAPHICAL REPRESENTATION ONLY AND ARE NOT TO SCALE. CENTER OF DEVICE IS INDICATED ON PLANS BY STATION.

**NOTE:**  
ALL RDS DEVICES SHOWN ON THE PLANS ARE EXISTING. USE UPGRADED RDS DEVICES (ONE (1) RDS DEVICE FOR BOTH DIRECTIONS) WHEN POSSIBLE.

LEGEND	
STRUCTURE TYPE	EXISTING / PROPOSED
PROPOSED CABINET	
PROPOSED FIBER LINE CONDUIT	
PROPOSED DYNAMIC MESSAGE SIGN (DMS)	
PROPOSED RADAR DETECTION SYSTEM (RDS)	
PROPOSED CLOSED-CIRCUIT TV (CCTV)	
EXISTING CABINET	
EXISTING FIBER LINE CONDUIT	
EXISTING DEMARICATION POINT	



JANUARY 2018

